



# FRM3 RELAY



**FIGURE 1 : FRM3**

Item \ Load	2,3 Poles		4 Poles	
	5A	7A*	3A	5A
Rating Load	30V DC / 220V AC		30V DC / 220V AC	
Switching Current	5A	7A*	5A	5A
Switching Capacity	1100VA / 150W	1540VA / 210W	660VA / 90W	1100VA 150W

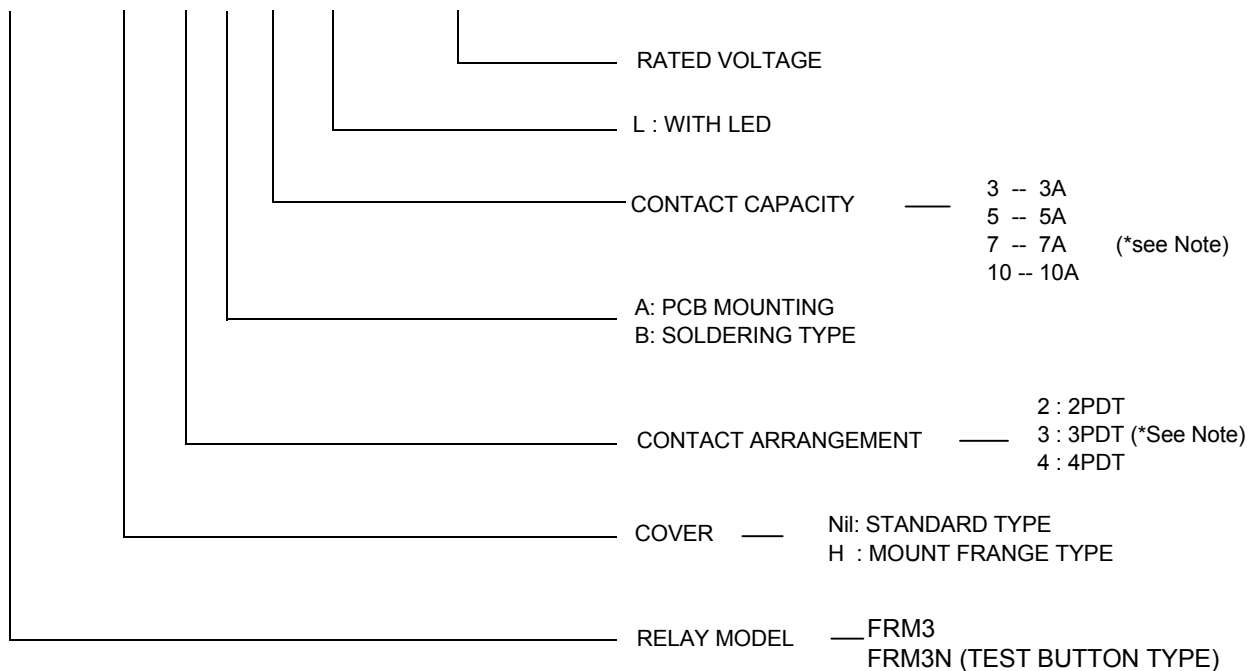
\* NOTE : FOR 2 POLES AND 3 POLES, THEY CAN REACH 10A. THE UL FOR 10A IS PENDING NOW.

**FIGURE 2 : FRM3N**

Item \ Load	2 Poles	4 Poles
	10A	5A
Rating Load	250V AC	250V AC
Switching Current	10A	5A
Switching Capacity	2500VA / 300W	1250VA / 150W

## ORDERING INFORMATION

**FRM3 - H 2 A 5 -L - DC12V**



\* Note :

FRM3

2PDT - available with 3A, 5A or 7A

3PDT - available with 3A, 5A or 7A

4PDT - available with 3A or 5A

FRM3N (Test Bottom Type)

2PDT - available with 10A

3PDT - not available for FRM3N model

4PDT - available with 5A

Note : Pb-Free and RoHS compliant relays are available.

**For ordering, please add suffix "Pb-Free" or "RoHS" to standard relay part numbers.**

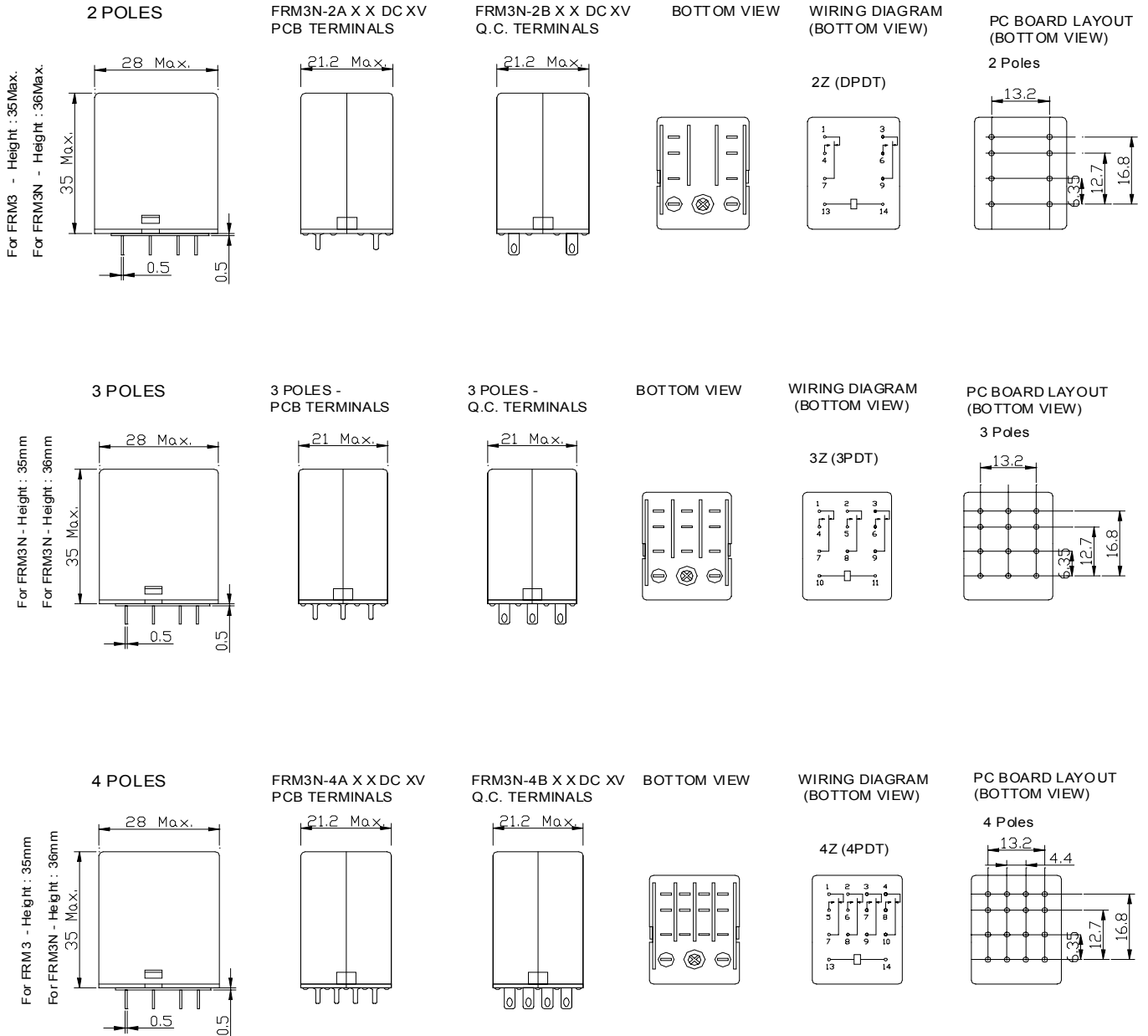
**For example : FRM3-2A5 DC 12V "Pb-Free" for Pb-Free Relay**

**For example : FRM3-2A5 DC 12V "RoHS" for RoHS Compliant Relay**

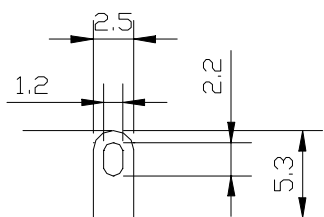
# FRM3 RELAY



## DIMENSIONS (UNIT: mm)



Socket Type Terminal



PCB Type Terminal

